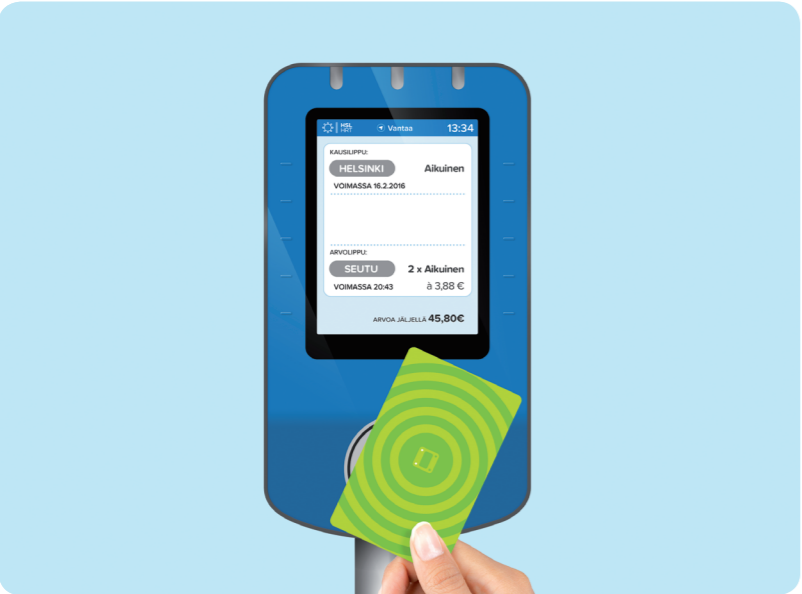


# Checking card balance and information



If you want to check the card balance and/or days remaining on your season ticket, hold your card on the card reader. The card reader will display any valid single tickets, season tickets and remaining value.



Try the new Travel Card reader  
and see what else is coming

→ [www.hsl.fi/en/newdevices](http://www.hsl.fi/en/newdevices)

# Travel zones

The card reader's travel zones correspond with the buttons of the old card reader. The 0 button has been replaced with the tram button.

- 3 Lähiseutu 3  
Närregion 3

**EXTENDED REGION 3**  
Helsinki, Espoo, Kauniainen, Vantaa, Kerava, Sipoo and Kirkkonummi
- L Lähiseutu 2  
Närregion 2

**EXTENDED REGION 2**  
Espoo, Kauniainen, Vantaa, Kerava, Sipoo and Kirkkonummi  
The ticket is not valid in Helsinki.
- 2 Seutu  
Region

**REGION**  
Helsinki, Espoo, Vantaa and Kauniainen
- 1 Sisäinen  
Intern resa

**INTERNAL**  
Internal value ticket for Helsinki, Espoo and Kauniainen, Vantaa, Kirkkonummi or Kerava-Sipoo.
- TRAM**  
Value ticket valid only on trams.  
Replaces the previous 0 button. If you have a Travel Card with a discount entitlement (child, student, pensioner, disabled), it is advisable to buy a 1-zone ticket. It is usually cheaper.

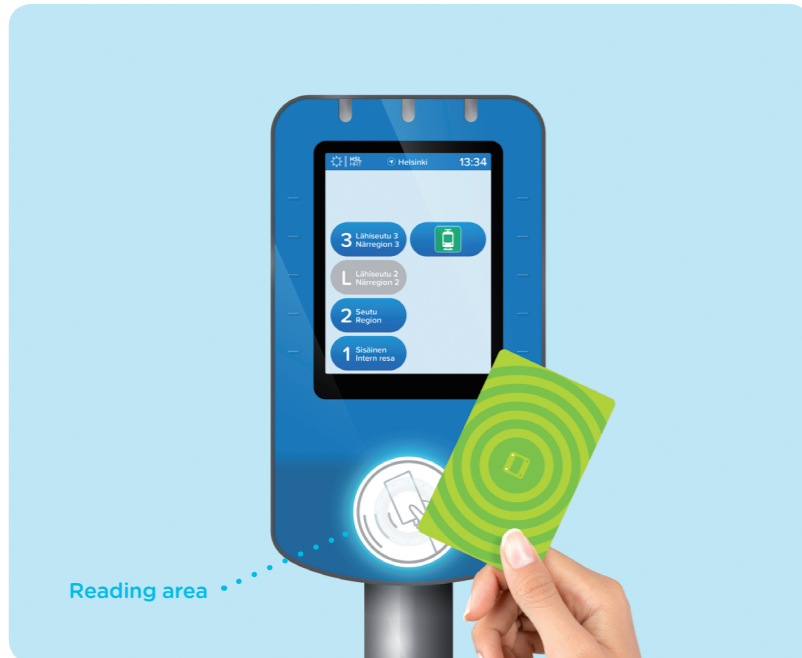
**HSL Customer Service**  
Tel. 09 4766 4000  
Mon-Fri 7am-7pm, Sat-Sun 9am-5pm  
[www.hsl.fi](http://www.hsl.fi)



# Using the new card reader



## Using a season ticket or transferring from one vehicle to another



Show your Travel Card to the reader. You need not press any buttons.

## Things to bear in mind

- Do not wave the card in front of the reader
- Do not press the buttons hard, a light tap is enough
- You can use the device with one hand, with gloves on
- You can cancel the purchase of a ticket by pressing

## Buying a value ticket



Select travel zone.



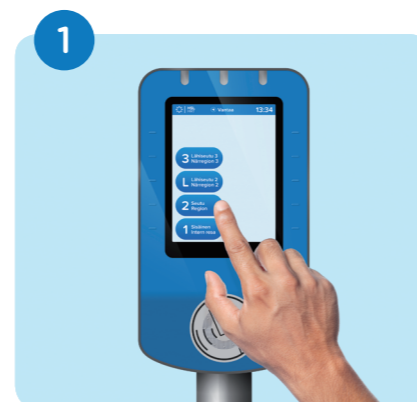
Confirm by pressing OK.



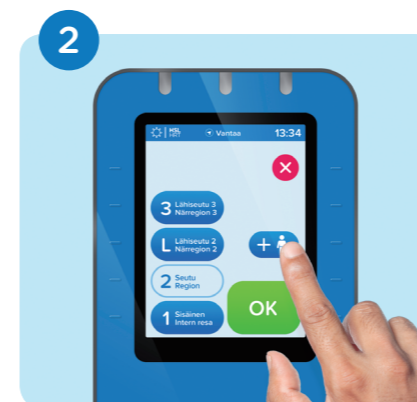
Show your Travel Card to the reader.

When transferring from one vehicle to another during the validity of the ticket, you only need to show your card to the reader.

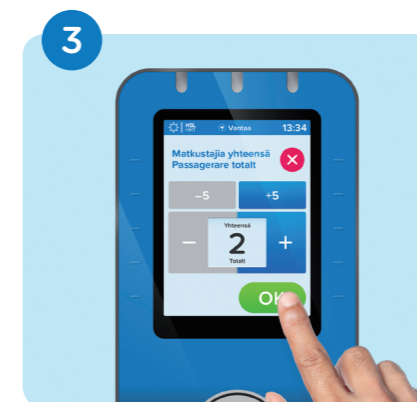
## Ticket for several passengers



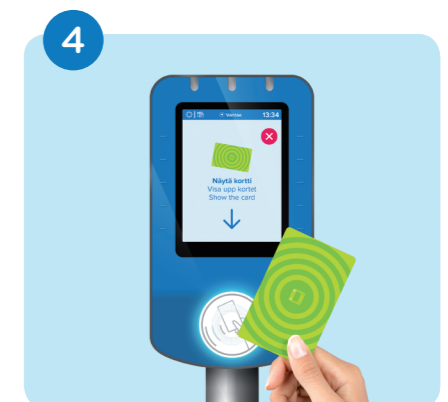
Select travel zone.



Press



Select the number of passengers. Include yourself in the number. Press OK.



Show your Travel Card to the reader.

If you have a valid season ticket, your ticket is automatically taken into account and the tickets for the other passengers are charged to the card balance.